

Applications & Features

- These transmitters/controllers can be used for temperature monitoring & controlling in duct air (TTD2), water and steam pipe (TTD4) or outside air (TTD3)
- High performance digital temperature sensor and digital technology applied, ensure accurate measurement fast response and good long term stability
- Multiple outputs selection, over voltage and reverse polarity protection, high reliability and anti-interference capability
- Optional relay for alarm or ON/OFF control
- Wide working temperature range
- Optional LCD & function keys can set parameters and calibrate output, so that the product becomes a stand alone controller
- High protection rate up to IP65

Specifications

Sensor: Digital temperature sensor

Range: see models

Output: 4~20mA (3 wires) / 0~10VDC, RS485/ Modbus

Storage Temperature: -40~85°C

Relay: 1×SPDT, 1A/30VDC, 0.5A/125VAC

Accuracy: $<\pm 0.5^{\circ}\text{C}@ -10\sim 85^{\circ}\text{C}$, see accuracy curve

Power: 15~28VAC/15~36VDC

Work Temp.: -40~85°C, 0~95%RH (Non condensing)

Storage Temperature: -40~85°C

Housing: ABS, SS probe, SS well

Protection: IP65

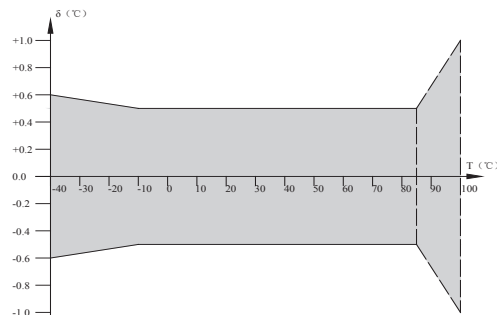
Approval: CE

Optional Accuracy: $0.25^{\circ}\text{C}@ -20\sim 105^{\circ}\text{C}$

(Add "H" after part number)

Optional LCD & function keys operation panel: refer to TTD1, connected with external cables, see more details on LCD & Keys operation

Accuracy Curve:



Analog error: max $\pm 0.1\%$ FS, after calibrated at 25 °C

Analog output thermal effect: $\pm 0.007\%$ FS/°C

Models

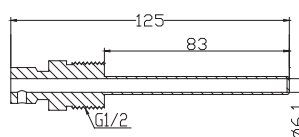
Model	TTD2				Duct mount digital temp. transmitter
	TTD3				Outside air digital temp. transmitter
	TTD4				Immersion digital temp. transmitter
Outputs		1	B		4-20mA/0-10VDC 4-20mA/0-10VDC, RS485/Modbus
Range (Note1)		1			-10~50°C
		2			-10~90°C
		3			-40~60°C
		7			Others
Relay (Note2)			0		No
			1		1*SPDT
Well Length (TTD2/4)				1	125mm
				2	200mm
				7	Others

Note1: Every product can be set ranges with accuracy $\pm 0.5^{\circ}\text{C}@ -10\sim 85^{\circ}\text{C}$ through LCD & function keys operation panel ; code 7 product can be set all ranges in -40~125°C with accuracy $\pm 0.5^{\circ}\text{C}$.

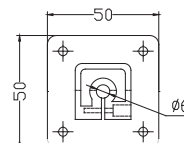
Note 2: Refer to working environment ambient guide GB/T4200 and WBGT, etc, the relay default settings are ON-30.0°C/OFF-29.5°C, and can be customized or set through LCD & function keys operation panel.

Accessories

TTD4 Stainless steel well A-T



TTD2 Install Flange



Outside Installation Radiation Shield

Model: RS

The RS can prevent the outside installation transmitter from rain and radiated heat, so as to assure accurate measurement for outside air temperature or humidity. This part is compatible for all outside enclosures including T3, TT3, T3N, TT3N, TTD3, TTD3N, H3, H3N, etc.

