

HL-G3 Series Three-Way Motorized Valves

General

HL-G3 series three-way motorized valves are used to control the cool/heat water flowing through or by pass the fan coil unit. When a thermostat sends the controlling signal to the motorized Valve, the valve is turned on to let water flow from C to B (Fig. 1), and when the signal disappears, the valve, with the help of its own spring, returns back to its original position to change the water flow from C to A(Fig. 2).

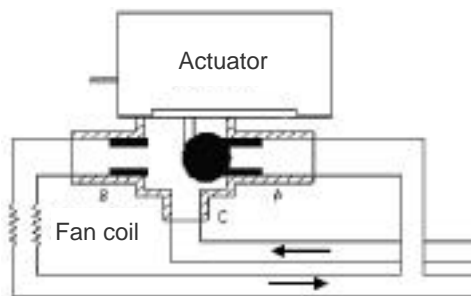


Fig.1

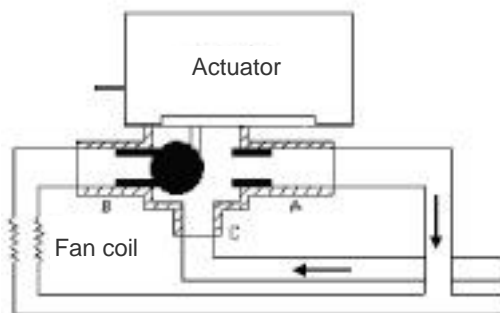
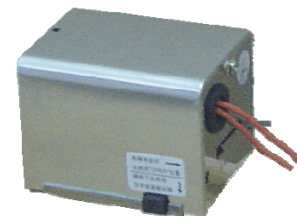
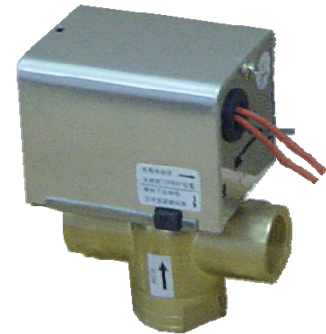


Fig.2



Features

- Forging Brass Body
- Stainless Base with Aluminum Shell
- Synchromotor Drive
- Efficient Power Consumption and Less Noise
- Separated Motorized Valve is easy to dismantle and install and convenient to use.

Model Listing

| No. | Model | Caliber | Body Structure | Kv (Cv) Value | Closing Pressure (MPa) |
|-----|--------------|-------------|---|---------------|------------------------|
| 1 | HL-G3-1/2 | 1/2" (15mm) | Actuator and valve body fixed together | 2.2 (2.5) | 0.20 |
| 2 | HL-G3-3/4 | 3/4" (20mm) | | 3.0 (3.5) | 0.18 |
| 3 | HL-G3-1 | 1" (25mm) | | 6.9 (8.0) | 0.15 |
| 4 | HL-G3-1/2-S2 | 1/2" (15mm) | Actuator is easily dismantled from valve body | 2.2 (2.5) | 0.20 |
| 5 | HL-G3-3/4-S2 | 3/4" (20mm) | | 3.0 (3.5) | 0.18 |
| 6 | HL-G3-1-S2 | 1" (25mm) | | 6.9 (8.0) | 0.15 |

Specifications

Power Supply : AC220V ± 10%, 50/60Hz

Power Consumption: <7W

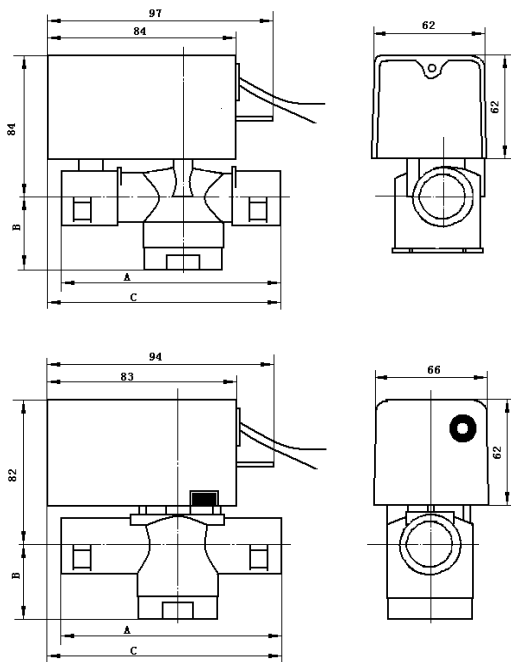
Pressure: 1.6MPa

Medium Temperature: 5~90°C

Valve Action Time: Open < 10s, Return < 6s

Working Environment: 5~60°C, 10%-95%RH

Dimension (mm)



| Model | A | B | C |
|--------------|----|----|-----|
| HL-G3-1/2 | 90 | 33 | 94 |
| HL-G3-3/4 | 94 | 37 | 103 |
| HL-G3-1 | 96 | 43 | 105 |
| HL-G3-1/2-S2 | 70 | 33 | 86 |
| HL-G3-3/4-S2 | 87 | 37 | 93 |
| HL-G3-1-S2 | 94 | 43 | 95 |

Installation

